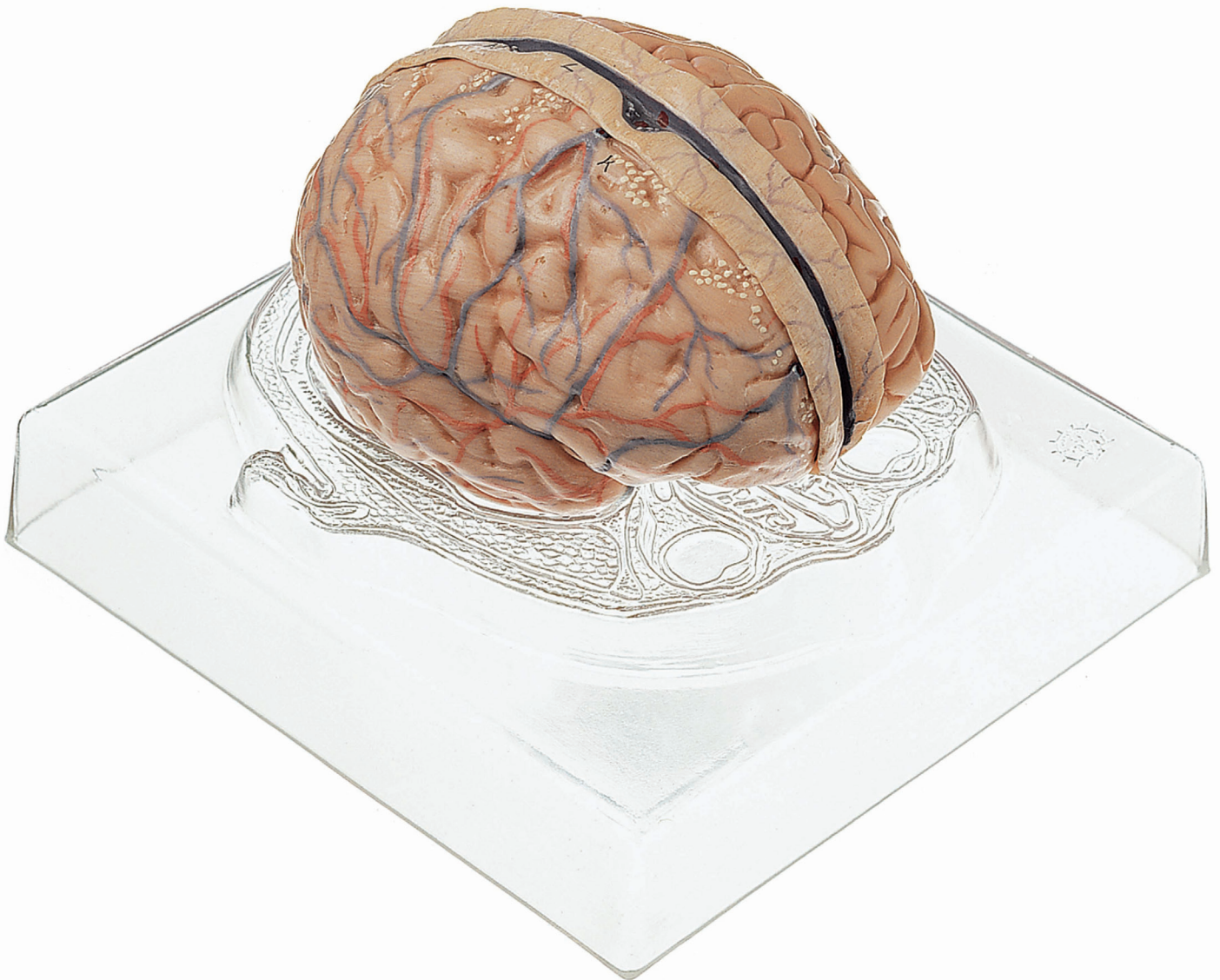


ANATOMY

Head and Nervous System

Nature is our Model



BS 23/3 • BRAIN

Natural size, in SOMSO-PLAST®. The model rests in its natural position on a transparent base which has a cross sectional relief drawing. The right half of the brain shows the meninges with the arteries and veins. The dura mater can be removed. The left half of the brain separates into four parts: Cerebrum, in two parts, with front cutaway, temporal lobes with cerebellum and brain stem. Comprises six parts in total. Height: 15 cm, width: 20 cm, depth: 22 cm, weight: 1.3 kg