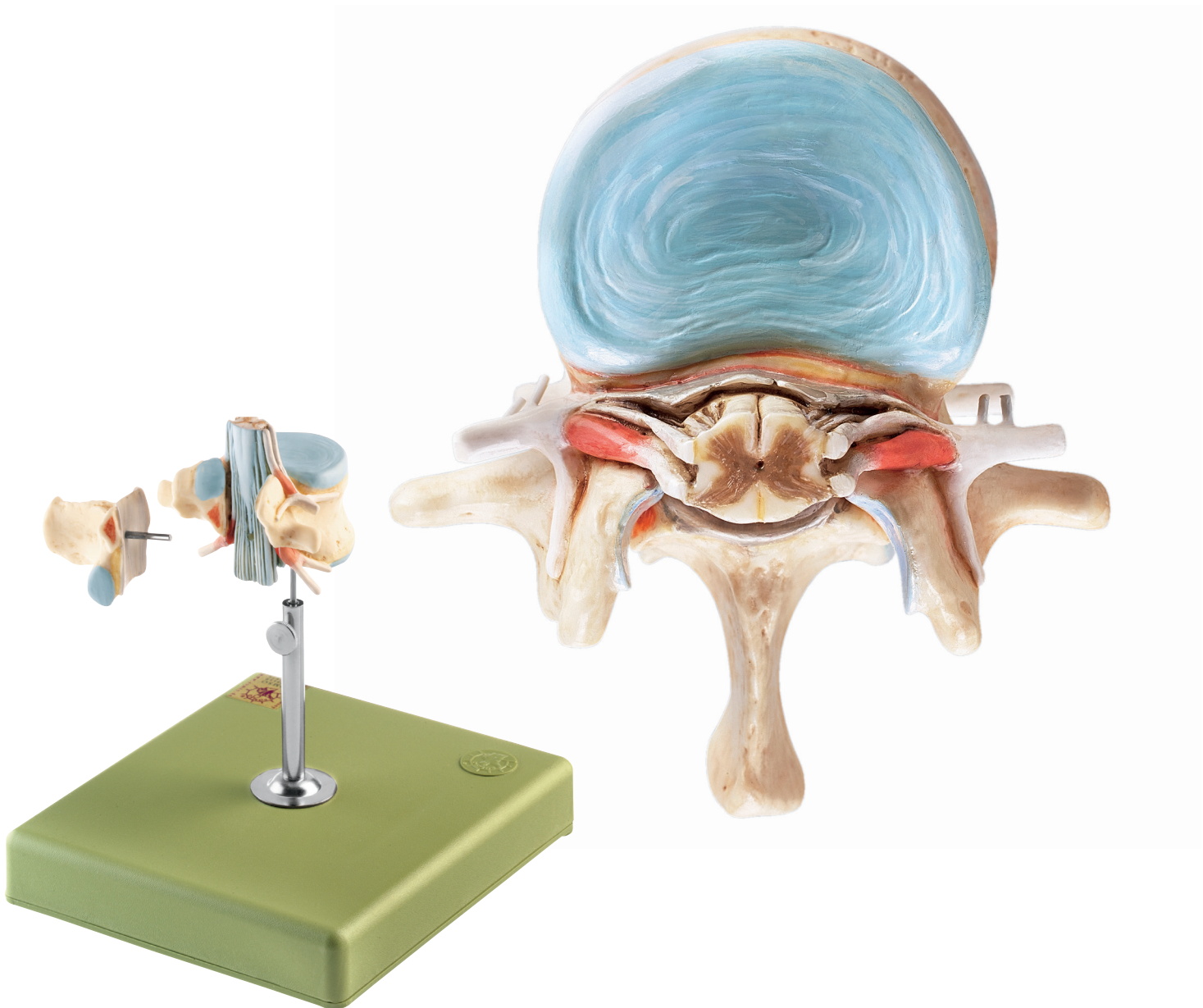


# ANATOMY

## Head and Nervous System

Nature is our Model



### BS 28 • LUMBAR VERTEBRA (L II) WITH LUMBAR REGION OF SPINAL CORD

Natural size, in SOMSO-PLAST®. Nerve endings, filum terminale, and cauda equina of the spinal cord (also in transverse section) are shown. Separates into 2 parts. On a stand with green base.

Height: 14 cm, width: 14 cm, depth: 16 cm, weight: 350 g