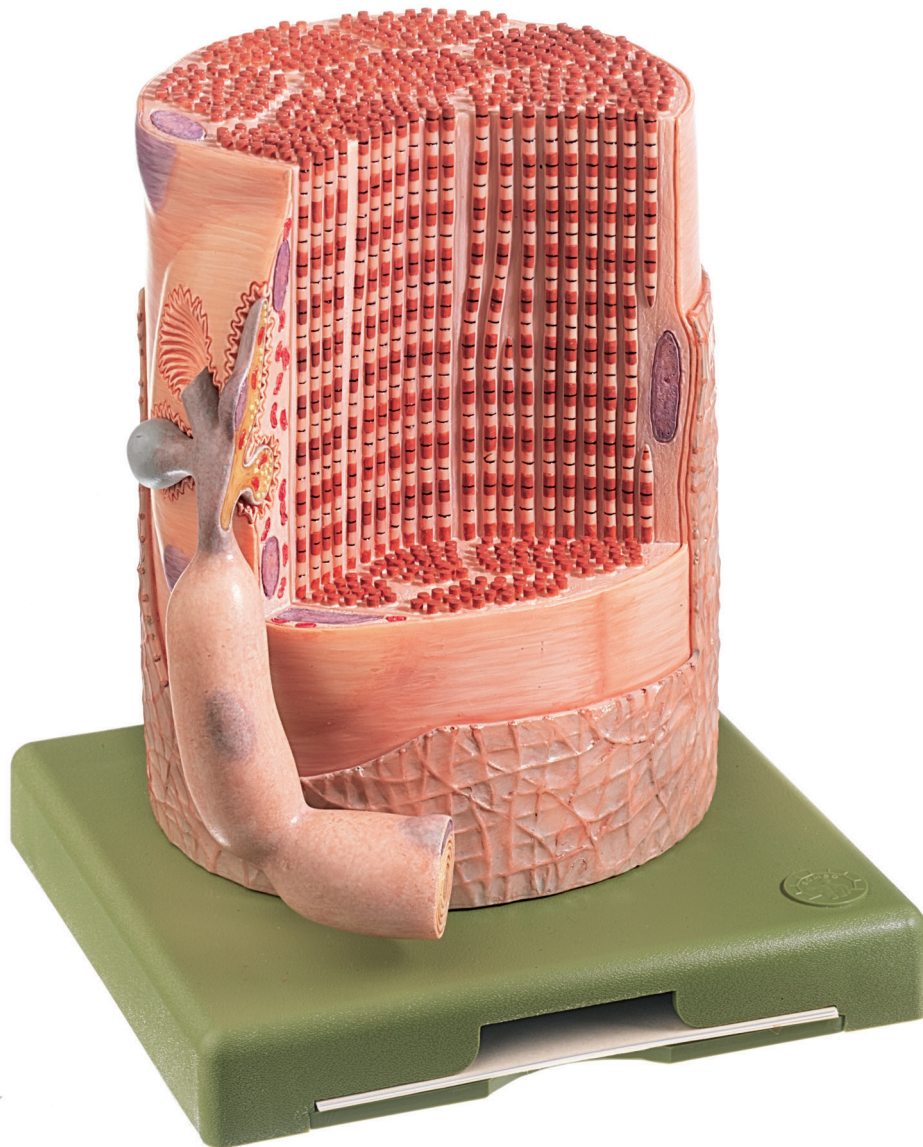


# ANATOMY

## Head and Nervous System

Nature is our Model



### BS 36 • TRANSVERSELY STRIATED MUSCULAR FIBRE WITH MOTOR END PLATE

Enlarged approximately 4,000 times, in SOMSO-PLAST®. In one piece.

On a green base. Height: 21 cm, width: 18 cm, depth: 18 cm, weight: 1,12 kg